

Welcome to the Utah Natural History Museum!

Name: _____

Period: _____



PALEONTOLOGY

noun: a science dealing with the life of past geological periods as known from fossil remains

1. Find an **ancient fossil** that interests you. What is it **called?** _____

2. What is it that is **most interesting** to you about this fossil? Explain: _____

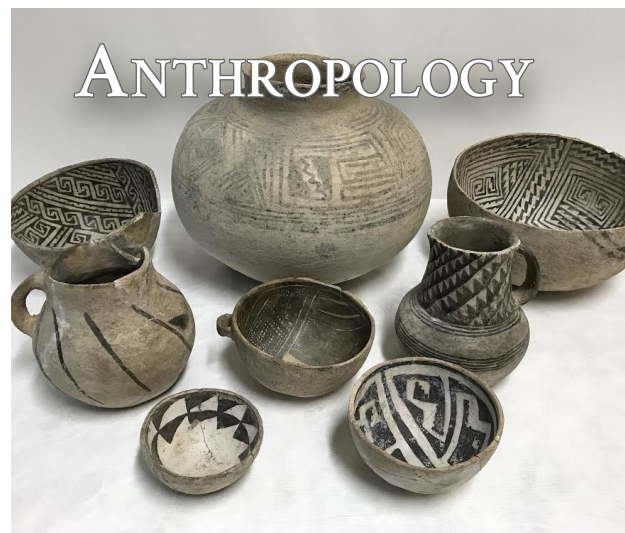
3. Find a fossil of a **different type** of animal. **Name** it, and share some **cool details** about it:

4. Share a **new** thing you learned today about fossils:

noun: the study of human beings and their ancestors through time and space and in relation to physical character, environmental and social relations, and culture

5. What is the **oldest artifact** that you saw at the museum? Share some facts about it:

6. Share something **new** that you learned about **Native Americans** that you learned at the museum:



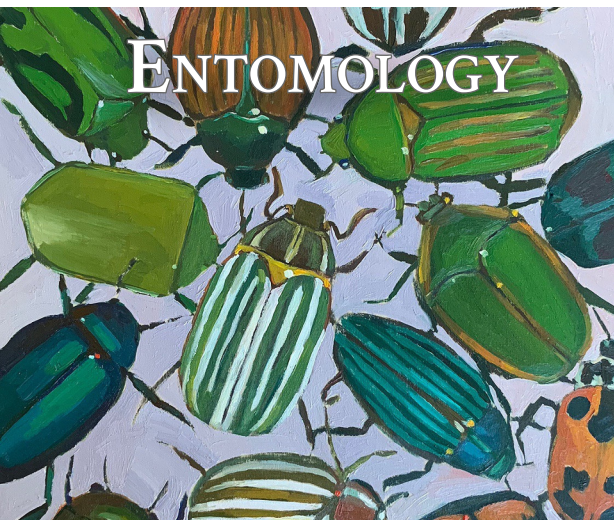
ANTHROPOLOGY

noun: a branch of zoology that deals with insects

7. Find an **indigenous insect** that interests you. What is it **called?** _____

8. Share a neat **fact** about your chosen insect:

9. If you **had** to **become** one of the **insects** shown here, **which** would you **choose?** Explain **why:**



ENTOMOLOGY

noun: the study of animals with a backbone, such as mammals, birds, reptiles, amphibians, etc.

VERTEBRATE ZOOLOGY

10. Which of the **vertebrates** is your favorite?

11. Explain **why** you like this particular species:

12. How can we **better protect** this species in Utah?



MINERALOGY



noun: a science dealing with minerals, their crystallography, properties, classification, and the ways of distinguishing

13. Find a **mineral** that is **fascinating**. Name it:

14. What **use(s)** does this mineral have?

15. **Where** can we **find it** here in **Utah**?

noun: the study of plants, including their evolutionary relationships and ecology

16. Find an **indigenous** plant species you're never seen before, and **describe it**: _____

17. Share something **new** that you learned about **native Utah plants** that you learned at the museum:

BOTANY



noun: the study of invertebrate creatures called **mollusks**, many of which live with or without shells.

18. Find an **indigenous mollusk** species that interests you. What is it **called**? _____

19. Share a neat **fact** about your chosen mollusk:

20. **Why** should we **bother studying** these creatures?

MALACOLOGY

